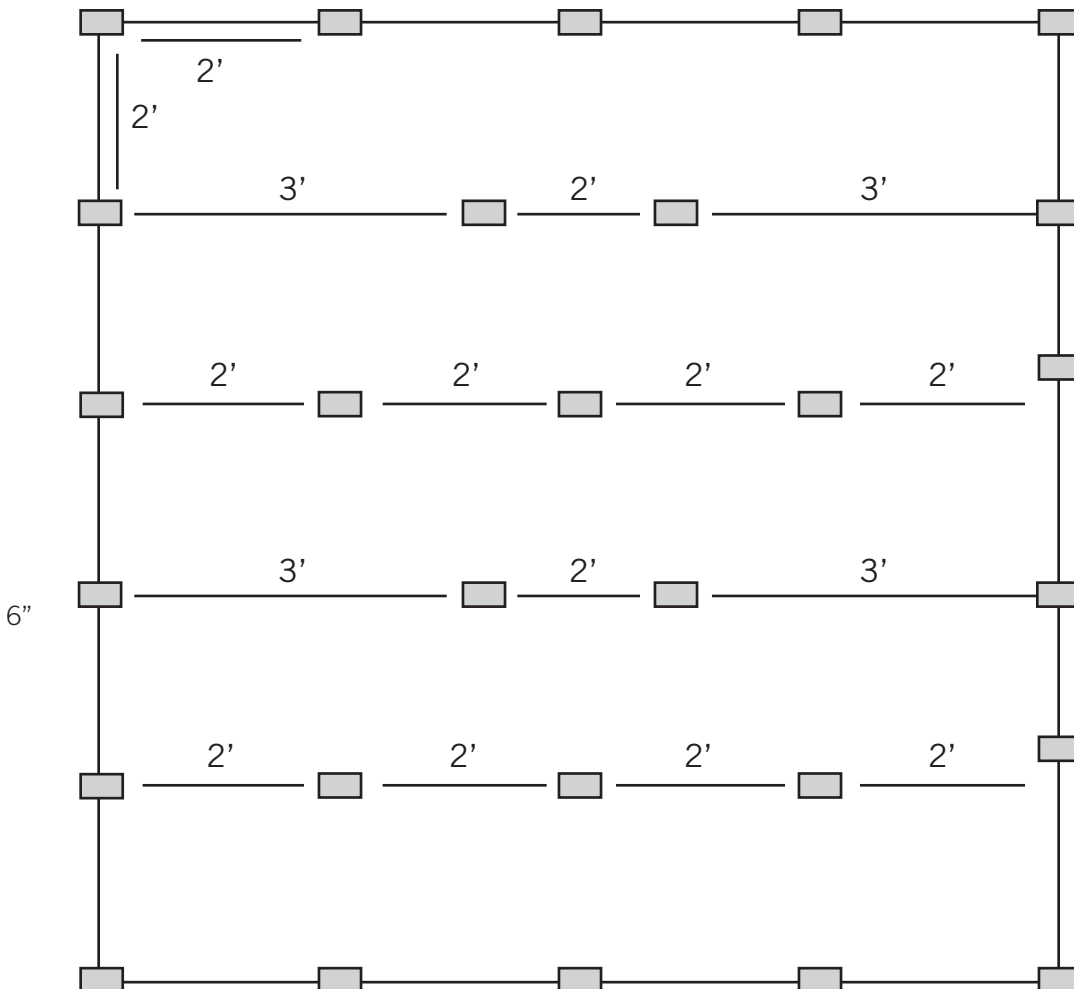


20 barb design for maximum holding power along with a ribbed design for maximum strength.

**ecoduty**  
STAKES

8' Wide Erosion Control Blanket - Staple Layout Guide



**Installation Notes:**

6" Ecoduty stake is used on this diagram for maximum holding power on steep terrain. Keep heads of stakes in line with the slope for water flow. Stakes are designed to fully biodegrade in 24 months.

Ecoduty's design is versatile enough to be used across various platforms of erosion control blankets on the market. Ecoduty stakes are designed to penetrate tough ground without breaking and outperform any stake on the market.

